



IMPORTANT
NOT RECOMMENDED
FOR OFF-ROAD USE
OR GOLF CARS THAT
EXCEED 19m.p.h.

INSTALLATION INSTRUCTIONS

BOLT ON RAISED REAR SUSPENSION FOR YAMAHA WITH LONGTRAVEL OPTION



G14, G16 & G19 Models

Y14-7-09

TABLE OF CONTENTS

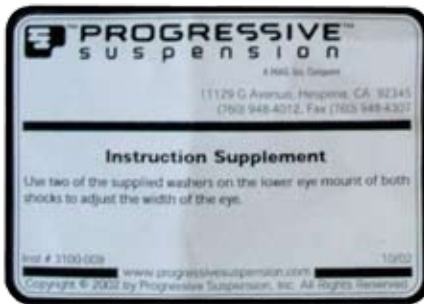
Optional Progressive Suspension Kit	2
Kit Contents	3-4
Disassembly	5-11
Assembly	12-19
Final Assembly	20

Optional: PROGRESSIVE SUSPENSION KIT

AA



BB



CC



DD



EE



FF



ID	Qty	Product #	Description
AA	2	MS-7-01A	Coil Over Dual Rate Shock 16"
BB	1	INSTRUCTIONS	Washer Usage Instructions
CC	4	MS-7-01-1	Shock Sleeves
DD	8	MS-7-01-2	Lower Eye Mount Washers
EE	1	MS-7-01-3	Spanner Wrench
FF	1	MS-7-01-4	Cam Adjuster Lubricant (3 gms)

KIT CONTENTS



ID	Qty	Product #	Description
A	1	Y14-7-09-10	YAMAHA REAR SUSPENSION LIFT FRAME
B	1	Y14-7-09-15	YAMAHA REAR SUSPENSION STABILIZER
C	1	Y14-7-09-20	YAMAHA REAR SUSPENSION MOTOR MOUNT
D	1	HW12-03	1/2" - 13 X 7 1/2" H.H.C.S GRADE 5 ZINC
E	5	HW38-36	3/8" -16 NYLOCK NUT ZINC GRADE 8
F	2	HW12-65	1/2" SAE GRADE 8 WASHER
G	1	SR-8-283	3/4" OD X .532 ID X 2" ROUND TUBE
H	1	SR-8-284	3/4" OD X .532 ID X 3/4" ROUND TUBE
I	5	HW38-39	3/8" X 16 X 2 1/2 H.H.C.S GRADE 8
J	1	E-11-65	BLACK PLASTIC RIVET
K	1	HW14-88	1/4" X 1" FENDER WASHER
L	2	HWE-03	1/4" X 3/4" NYLON SPACER 3/8" CENTER HOLE
M	2	HW12-73	1/2" NYLON LOCKNUT ZINC - GRADE 2
N	1	HW12-10	1/2" 13 X 2 1/2" H.H.C.S GRADE 8

DISASSEMBLY

Please read and understand these instructions completely before starting this project. It is strongly recommended for your protection that you wear safety glasses during the installation of this suspension.



STEP 1:

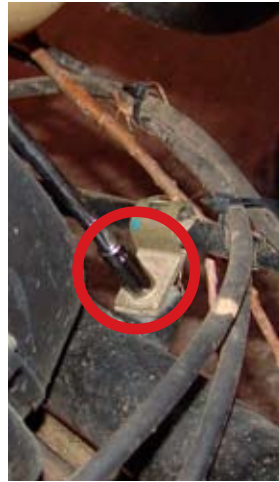
Raising the cart to a comfortable work height. Place jack under rear axle and raise cart. Place jack stands under each side of the frame and lower the cart onto the jack stands. **Make sure cart is stable and secure on the jack stands. Disconnect the Battery.**

STEP 2:

Remove rear wheels and tires, it is also recommended that the body be removed for easy installation.



DISASSEMBLY

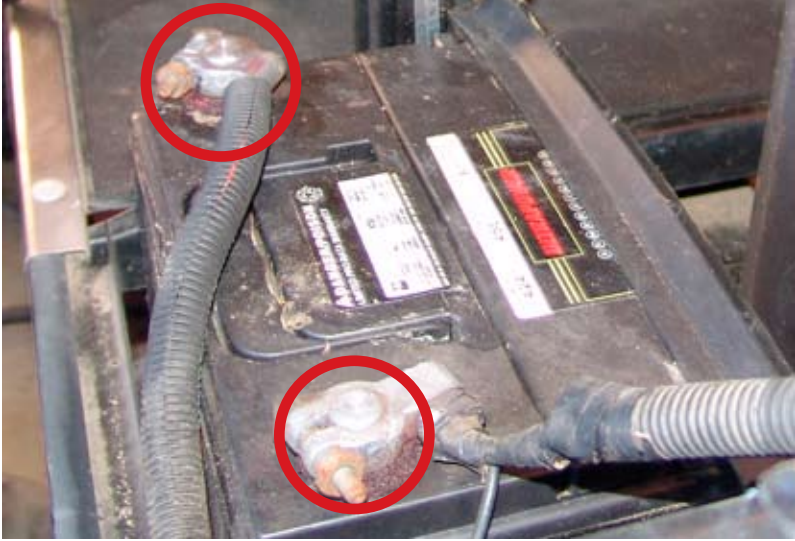


STEP 3:
Remove the left and right brake line holders.



STEP 4:
Remove both left and right brake lines from the brake drums.

DISASSEMBLY



STEP 5:
Be sure to disconnect the battery.



STEP 6:
Un-plug the wiring harness.



STEP 7:
Remove the choke from the body.

DISASSEMBLY



STEP 8:
Un-bolt fuel pump and save the bolt.



STEP 9:
Un-Bolt the panhard bar and save the nut and bolt.

DISASSEMBLY



STEP 10:

Use a jack to support the motor while unbolting the next three main bolts that support the motor.



STEP 11:

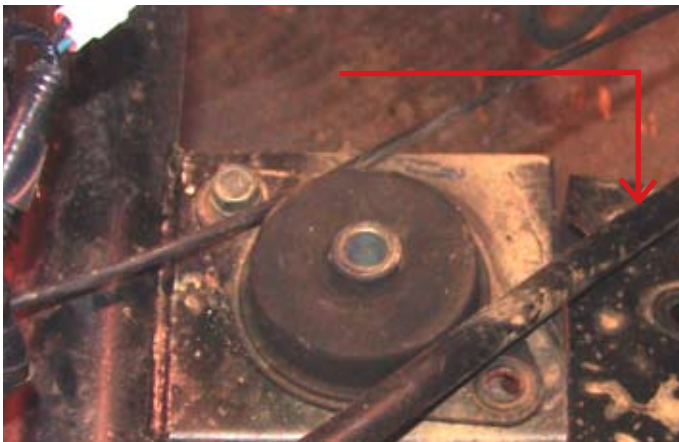
Un-bolt and remove the main motor mount bolt.

DISASSEMBLY



STEP 12:

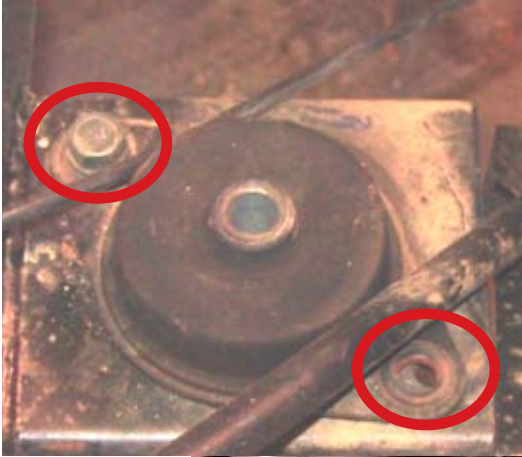
Remove the left and right top shock mount nuts and bolts and save.
Warning the motor will drop after removing these bolts!



STEP 13:

While supporting the motor with the hydraulic jack move the motor back and lower the main motor mounting point below the stock mounting point.

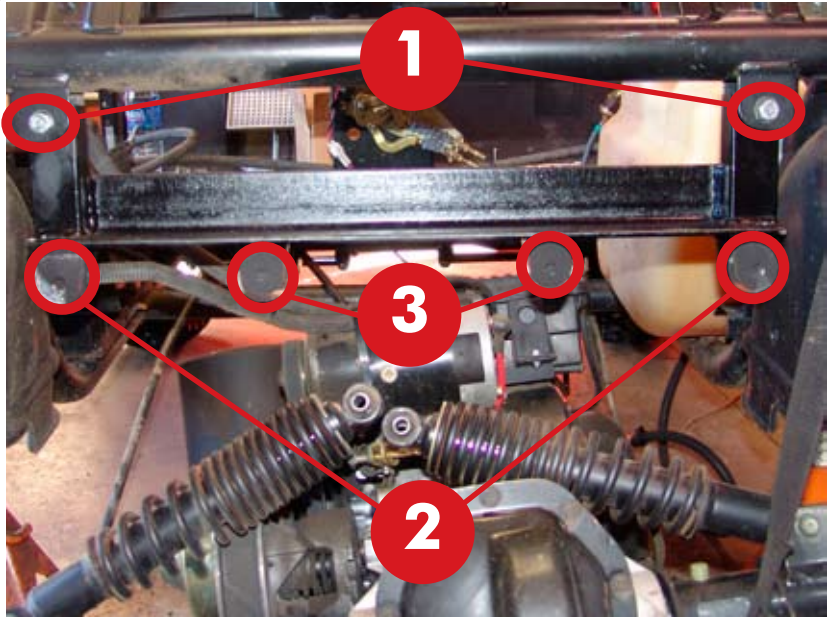
DISASSEMBLY



STEP 14:

Remove the stock motor mount bolts and remove the motor mount. Then drill the motor mount holes to 3/8" to accept the new bolts during assembly.

ASSEMBLY



STEP 1:

Install the new Yamaha Rear Suspension Lift Frame **A** with the bolts **I** and nylon spacers **L** tighten securely with nuts **E** .

STEP 2:

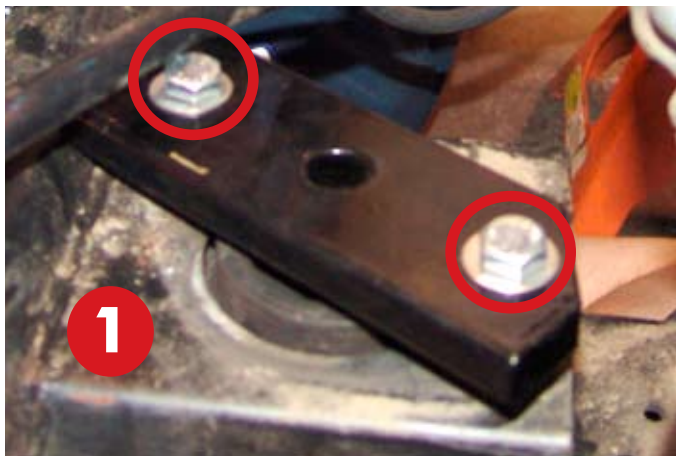
Install the stock shocks using the stock nuts and bolts to the mounting points shown in figure 2. Slide the bolts through and connect the nuts but do not tighten the nuts. This will support the rear of the motor and allow enough play for installing the main motor mount.

STEP 3: **Optional**

Use the inside mounting tabs in figure 3 when replacing the stock shocks with the optional Progressive Shock Kit.

Note: When using the optional Progressive Shock Kit the bottom shock mounting points will need washers to shim the gaps between new shock and stock mounting points.

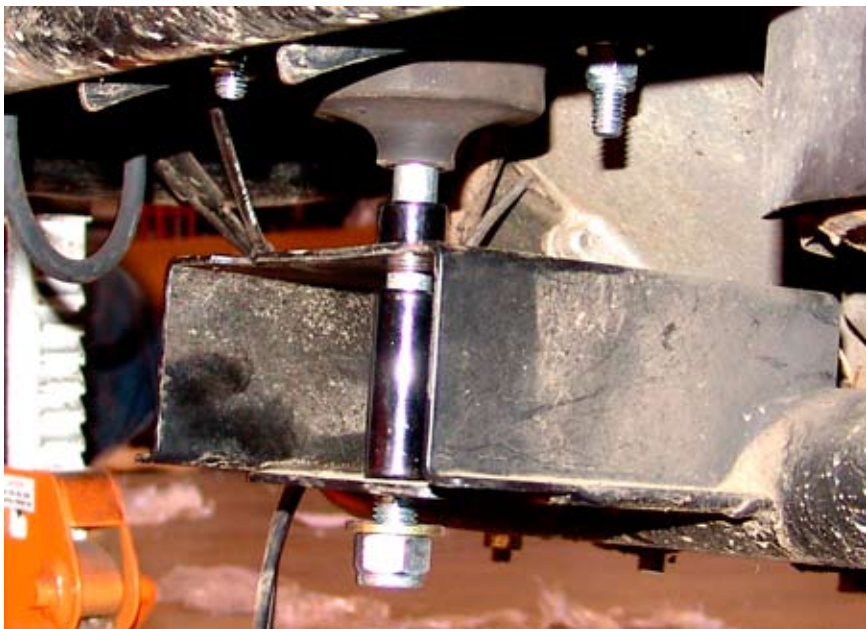
ASSEMBLY



STEP 4:

Place the new motor mount brace as shown in figure 1 and slide the new 3/8" bolts **I** with washers **C** through the brace. Then place the bolts with the motor mount brace into position as shown in figure 1. Then install the stock motor mount under the cart using the new bolts provided and tighten securely as shown in figure 2.

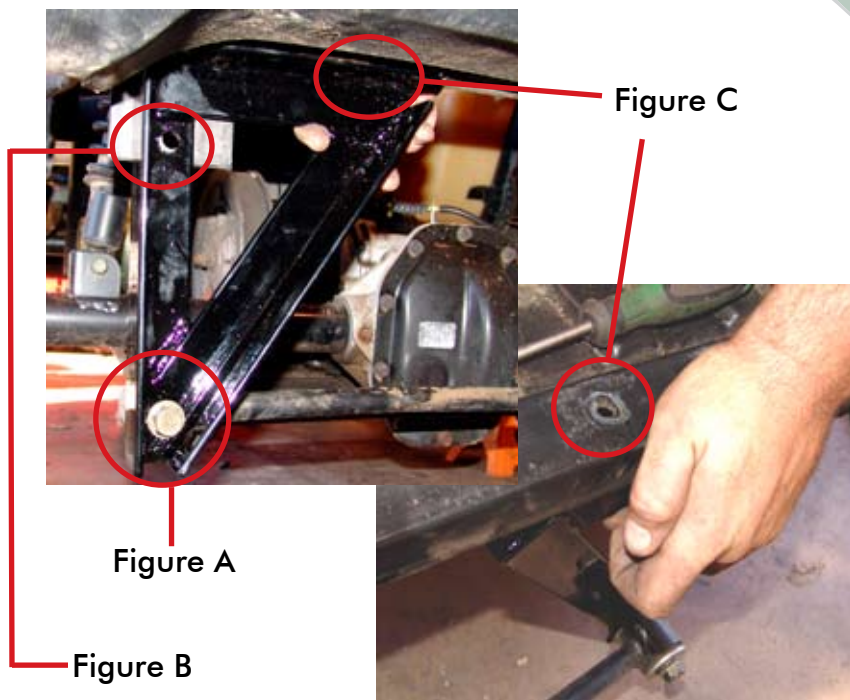
ASSEMBLY



STEP 5:

Insert the main motor mount bolt **D** with washer **F** through the motor mount, the small spacer **H**, and then the motor mount frame with the large spacer **G** inside. As shown in the picture above. Install the nut **M** and washer **F** then tighten securely.

ASSEMBLY



STEP 6:

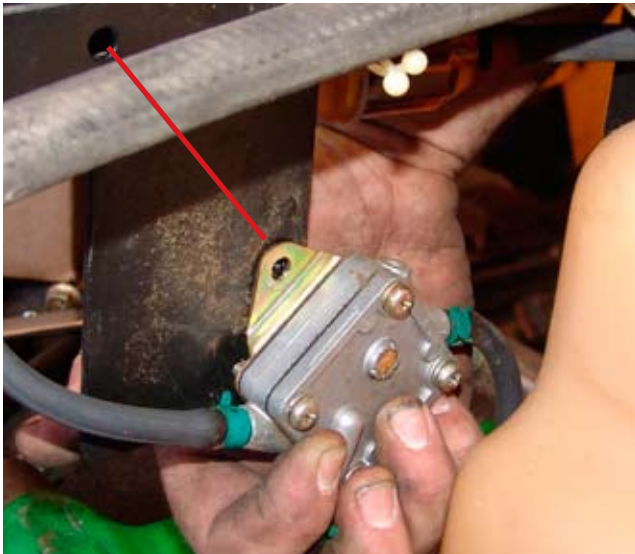
Attach the stabilizer bar to the stabilizer mount **B** using the stock nut and bolt as shown in figure A. Then attach stabilizer mount **B** to the cart frame using nut **M** and bolt **N** as shown in figure B. Then bolt the stabilizer bar as shown in Figure C using nut **E** and bolt **I**. Then tighten the bolts securely.

ASSEMBLY



STEP 7:

Tighten the shock mount bolts and then re-check all the bolts for tightness.



STEP 8:

Move the fuel pump down from its stock position on the frame and attach to the threaded hole using the stock bolt.

Note: If you do not move the fuel pump a longer fuel line will be required to allow for movement of the suspension.

ASSEMBLY



STEP 9:

Drill a new hole for the choke knob approximately 4" below the stock hole and install the choke. Install the hole plug provided into the stock choke hole.

ASSEMBLY



FINAL STEP:

Now you're ready to reinstall the body. Raise cart. Remove the jack stands. Lower the cart and you're done!

CONGRATULATIONS! You've just completed the installation of the STRECH PLASTICS LONGTRAVEL™ - Rear. We are the number #1 manufacturer and distributor of the highest quality golf cart products. **Visit our website www.strechplastics.com** for more quality products to help dress up your Yamaha. We can help you stand out from the crowd.

Strech
Plastics, Inc.
est. 1974

Golf Car Accessories Leader



Specializing In:

Dashes • Trays
Steering Wheel Covers • Lift Kits
Windshields • Dash Trays • Lights
Cowls • Rear Seat Kits • Wheels and Tires
Steering Wheels • Billet Accessories
Wheel Covers • Storage Covers • Weather Enclosures
Coolers and Brackets • Ball and Club Washers • Mirrors
Ramps • Storage Covers • Sand and Seed Bottles • And More . . .