



INSTALLATION INSTRUCTIONS

# BOLT ON 4 PASSENGER SEAT KIT FOR E-Z-GO RXV

Model: EZGO RXV Freedom

**RX-6-26**



# TABLE OF CONTENTS

Table of Contents .....	1
Kit Contents .....	1-4
Disassembly .....	5-6
Assembly .....	7-18

# KIT CONTENTS



<b>ID</b>	<b>Qty</b>	<b>Product #</b>	<b>Description</b>
A	8	HW1.0-06	1" Tube End Cap
B	10	HW14-13	1/4" SAE Flat Washer
C	4	HW14-19	1/4"-20 x 1 1/4" Phillips Flat Head
D	6	HW14-34	1/4" X 1 3/4" H.H.C.S. Zinc
E	8	HW14-65	1/4" x 1-1/4" H.H.C.S. Bolt
F	2	HW516-05	5/16"-18 x 2" H.H.C.S Grade 2 Zinc
G	8	HW516-07	5/16" x 2-1/2" H.H.C.S. Bolt/Grade 2
H	10	HW516-17	10 5/16" - 18 Nylon Lock Nut
I	20	HW516-18	24 5/16" SAE Flat Washer
J	4	HW14-105	1/4"-20 X 1" Hex Bolt Zinc
K	10	HW14-14	1/4" Split Lock Washer Zinc
L	8	HW14-88	1/4" x 1" Fender Washer Zinc

**I**



**B**



**A**



**J**



**C**



**H**



**G**



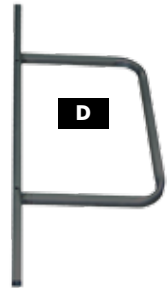
**E**



**F**



**D**



<b>ID</b>	<b>Qty</b>	<b>Product #</b>	<b>Description</b>
A	1	E-6-2000-2L	Club Car 4 Seat Arm Rest Left (driver)
B	1	E-6-2000-2R	Club Car 4 Seat Arm Rest Right (pass)
C	1	RX-6-26-10	RXV 4 Seat Crossbar Hoop
D	1	RX-6-26-4	RXV 4 Seat Under Seat Brace
E	2	RX-6-26-6	RXV Front Seat Back Supports
F	2	RX-6-26-7-S-8-353	RXV Under Seat Brace Plates
G	2	RX-6-26-7	RXV 4 Seat Step Brace
H	1	RX-6-26-8	RXV4 Seat Step Frame
I	1	*HW-42B	*4 Passenger Kit Seat Beige
J	1	MS-6-09	4 Passenger Seat Kit Step Stretch Plastics

**\*SEAT KIT ALSO AVAILABLE IN THE FOLLOWING COLORS:**

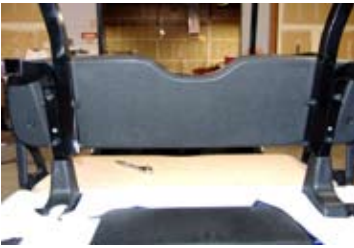
- HW-42A — Antelope
- HW-42B — Beige
- HW-42C — Camouflage
- HW-42I — Ivory
- HW-42T — Tan
- HW-42W — White

# Disassembly



**STEP 1:**  
Remove the top.

**STEP 2:**  
Remove the bag holder basket.



**STEP 3:**  
Remove the 4 bolts to the top supports and remove the top supports.

**STEP 4:**  
Remove the front seat back and save the hardware.



**STEP 5:**  
Then remove the inspection cover and front seat for access.

**STEP 6:**

Remove the seat back support mounts and plastic support covers. Save the bolts for installation.

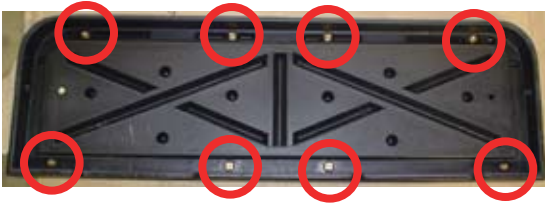


**STEP 7:**

Remove the rear bumper and save the side bolts for use during installation.



## Assembly



**STEP 1:**

Place the step frame on a table with the mounting tabs facing up. Place the plastic step assembly on top of the frame then while holding on to both pieces flip the assembly over. Using eight 1/4" x 1-1/4" bolts and eight 1/4" x 1" fender washers secure the plastic foot rest to the step assembly.



**STEP 2:**

Take the OEM bolts removed from the bumper and bolt the step frame into place with the side tabs facing up.

**STEP 3:**

Take the OEM bolts removed from the bumper and bolt the step frame into place.



**STEP 4:**

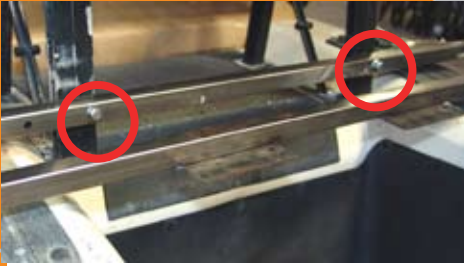
Install Front Seat Back Supports using OEM bolts. Only finger tighten bolts allowing some play until the front seat back is installed. Install plastic end caps into the top of the supports.



**STEP 5:**

Install the front seat back using OEM bolts.



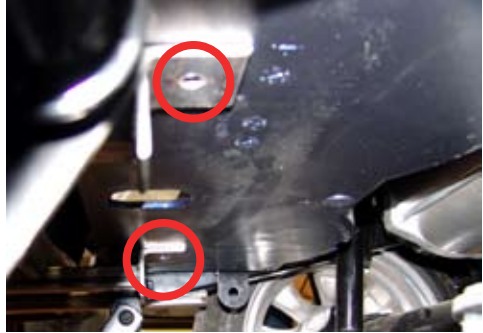


**STEP 6:**

Install the back frame brace with the tabs facing down to the front seat back supports with two 5/16" x 2-1/2" bolts with 5/16" washers and 5/16" nylock nuts. Then tighten the front seat back supports, the seat back, and the back frame brace. Re-install the inspection cover.

**STEP 7:**

Under the cart bagwell drill 2 pilot holes through the bagwell with a 3/16" drill bit at the center of the tab holes in the footrest frame.



**STEP8:**

Flip the rear seat bottom over and install the under seat brace plate using four 1/4" x 1" bolts with 1/4" flat and locking washers. Only finger tighten bolts.

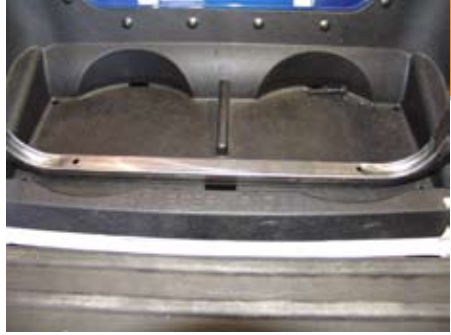
**STEP9:**

Slide the seat into place with the tabs under the rear seat frame.



**STEP10:**

Put the main frame support and line it up to the pilot holes. Then drill through the top of the bagwell with a 5/16" drill bit. Then slide the two 5/16" x 2" bolts with 5/16" flat washers through the main frame support, bagwell and step frame tabs. Then finger tighten the 5/16" bolts with 5/16" flat washers under the bagwell to hold the main frame support into place.

**STEP11:**

Slide one 5/16" x 2 1/2" bolt with one 5/16" washers through the armrest holes then place the bolt through the frame and the seat plate on the bottom then install the 5/16" flat washers and 5/16" nylock nuts and finger tighten. Repeat procedure for other side.

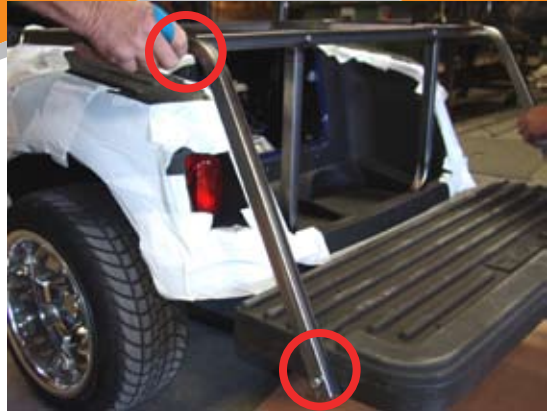
**Note:** Make sure the tabs on the top of the armrests face inward

**STEP12:**

Then slip the top of the footrest support in between the seat tab and the arm rest. Slide one 5/16" x 2 1/2" bolt with one 5/16" washers through the armrest holes then place the bolt through the frame and the seat plate on the bottom then install the 5/16" flat washers and 5/16" nylock-nuts and finger tighten. Repeat procedure for other side.

**STEP13:**

Then secure the top footrest supports using two 1/4" x 1 3/4 bolts with 1/4" flat and locking washers. Secure the bottom of the footrest supports to the footrest using two 5/16" x 2 1/2" bolts with four 5/16" flat washers and two 5/16" nylock nuts. Finger tightening only at this point in the installation. Install two 1" caps at the bottom of the supports.



**STEP14:**

Then install the seat back onto the armrest tabs using the inner holes on both sides with 1/4" philips flat head screws and fully tighten. Then go around the entire frame and tighten all the bolts that were only finger tightened earlier in the instructions.

**STEP15: Optional Long-top Supports.**

Then install the long top supports using the outer 2 holes on the armrest tabs with L-shape on top facing toward the back of the cart.

If you would like an 80" LongTop and supports please contact a Strech Plastics Sales Rep at: 1-800-752-6799



**STEP16:**

**Important:** Re-check all of the bolts and screws and make sure they are tight. Some may have become loose again while installing other parts.

**Congratulations!** Your finished with the installation of your new RXV 4 Passenger Seat Kit from Strech Plastics Inc.

STRECH PLASTICS ARE MANUFACTURERS AND DISTRIBUTORS OF THE HIGHEST QUALITY GOLF CAR PRODUCTS

**Strech**  
Plastics, Inc.  
est. 1974

Golf Car Accessories Leader



Specializing In:

Dashes • Trays  
Steering Wheel Covers • Lift Kits  
Windshields • Dash Trays • Lights  
Cowls • Rear Seat Kits • Wheels and Tires  
Steering Wheels • Billet Accessories  
Wheel Covers • Storage Covers • Weather Enclosures  
Coolers and Brackets • Ball and Club Washers • Mirrors  
Ramps • Storage Covers • Sand and Seed Bottles • And More . . .

©2008 Rev.04/21/08

VISIT US ON THE WEB TO CHECK OUT MORE GREAT PRODUCTS — [www.strechplastics.com](http://www.strechplastics.com)