



! WARNING !

- ▶ AVOID STANDING IN FRONT OR BEHIND VEHICLE.
- ▶ NO MORE THAN 2 OCCUPANTS PER SEAT.
- ▶ ALWAYS REMAIN SEATED AND HOLD ON WHILE VEHICLE IS IN MOTION.
- ▶ KEEP FEET, LEGS, HANDS AND ARMS INSIDE THE VEHICLE AT ALL TIMES.
- ▶ DO NOT LEAVE CHILDREN UNATTENDED ON SEAT WHILE VEHICLE IS STILL OR WHILE IN MOTION.

FAILURE TO FOLLOW THESE INSTRUCTIONS MAY RESULT IN SEVERE PERSONAL INJURY.

INSTALLATION INSTRUCTIONS

BOLT ON 4 PASSENGER FLIP-FLOP SEAT KIT FOR E-Z-GO RXV

Model: EZGO RXV Freedom

RX-6-21



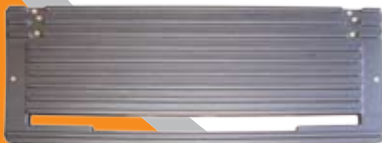
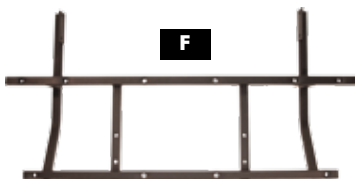
TABLE OF CONTENTS

Table of Contents	1
Kit Contents	1-4
Disassembly	5-6
Assembly	7-18

KIT CONTENTS



ID	Qty	Product #	Description
A	8	HW1.0-06	1" Tube End Cap
B	12	HW14-13	1/4" SAE Flat Washer
C	20	HW14-14	1/4" Split Lock Washer
D	1	HW14-26	1/4" Tube Connector (spare)
E	8	HW14-88	1/4" x 1" Fender Washer
F			
G	16	HW516-17	5/16" - 18 Nylon Lock Nut
H	30	HW516-18	5/16" SAE Flat Washer
I	14	HW14-55	1/4" x 1/2" Phillips Truss Head Bolt
J	2	HW14-63	1/4" x 1/2" H.H.C.S. Bolt
K	2	HW516-05	5/16" - 18 x 2" H.H.C.S. Grade 2
L	2	HW516-14	5/16" x 4 1/2" H.H.C.S. Grade 2
M	6	HW14-34	1/4" x 1-3/4" H.H.C.S. Bolt
N	8	HW14-65	1/4" x 1-1/4" H.H.C.S. Bolt
O	4	HW14-64	1/4" x 1-1/2" H.H.C.S. Bolt
P	8	HW516-04	5/16" x 1 3/4" H.H.C.S. Grade 2
Q	4	HW14-19	1/4" x 1-1/4" Phillips Flat Head Bolt
R	4	HW14-87	1/4" x 2" Phillips Flat Head Bolt
S	2	HW516-07	5/16" x 2-1/2" H.H.C.S. Bolt/Grade 2
T	2	M-20-35	4" Strap Hinge



ID	Qty	Product #	Description
A	1	E-6-21-4L	Club Car 4 Seat Arm Rest Left (driver)
B	1	E-6-21-4R	Club Car 4 Seat Arm Rest Right (pass)
C	2	RX-6-26-6	RXV Front Seat Back Supports
D	1	RX-6-21-7L	RXV FlipFlop Seat Step Brace (Driver)
E	1	RX-6-21-7R	RXV FlipFlop Seat Step Brace (Pass)
F	1	RX-6-26-8	RXV 4 Seat Step Frame
G	2	RX-6-21-10	RXV Flip Flop Straight Brace Front
H	1	RX-6-21-11	RXV Flip Flop Straight Brace Rear
I	1	RX-6-21-9	RXV Flip Flop Deck Brace
J	2	MS-0-195	TXT FLIP FLOP Deck Kit
K	1	MS-6-09	TXT FLIP FLOP Seat Kit Step
L	2	HW-21*	TXT FLIP FLOP Kit Seats

***=** Represents Color of Seat

B = Beige

C = Camouflage

GY = Gray

TT = Tan Tweed

BLK = Black

CT = Charcoal Tweed

I = Ivory

W = White

BT = Black Tweed

GT = Gray Tweed

T = Tan

Y = JD Yellow

Disassembly



STEP 1:
Remove the top.

STEP 2:
Remove the bag holder basket.



STEP 3:
Remove the 4 bolts to the top supports and remove the top supports.

STEP 4:
Remove the front seat back and save the hardware.



STEP 5:
Then remove the inspection cover and front seat for access.

STEP 6:

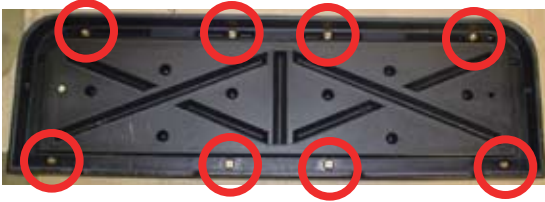
Remove the seat back support mounts and plastic support covers. Save the bolts for installation.

**STEP 7:**

Remove the rear bumper and save the side bolts for use during installation.



Assembly

**STEP 1:**

Place the step frame on a table with the mounting tabs facing up. Place the plastic step assembly on top of the frame then while holding on to both pieces flip the assembly over. Using eight 1/4" x 1-1/4" bolts, 8 - 1/4" x 1" fender washers, and 8 - 1/4" locking washers secure the plastic foot rest to the step assembly.





STEP 2:

Take the OEM bolts removed from the bumper and bolt the step frame into place with the side tabs facing up. Fully tighten bolts.

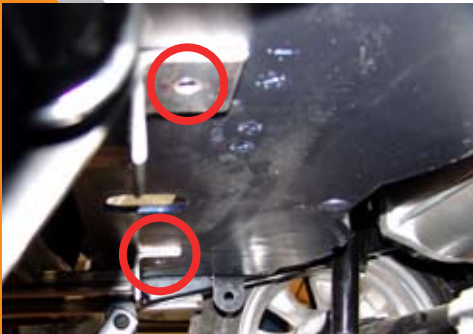


STEP 3:

Install Front Seat Back Supports using OEM bolts. Only finger tighten bolts allowing some play until the front seat back is installed. Install plastic end caps into the top of the supports.

STEP 4:

Install the front seat back using OEM bolts. Only finger tighten to allow some play during the rest of the installation.



STEP 5:

Under the cart bagwell drill 2 pilot holes through the bagwell with a 3/16" drill bit at the center of the tab holes in the footrest frame.

**STEP 6:**

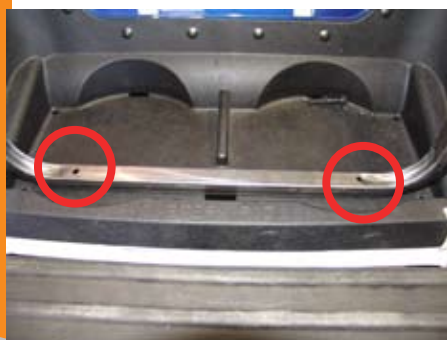
Place the flip flop seat bottom face down on the floor and install the rear straight brace with the bars facing outward and the front straight brace as shown using 4 - 1/4" x 1 1/2" bolts with 4 - 1/4" flat & locking washers. Fully tighten these bolts.

STEP 7:

Install the flip flop deck brace to the flip flop seat bottom using 2 - 1/4" x 1/2" bolts with 2 - 1/4" locking washers. Only finger tighten at this point.

**STEP8:**

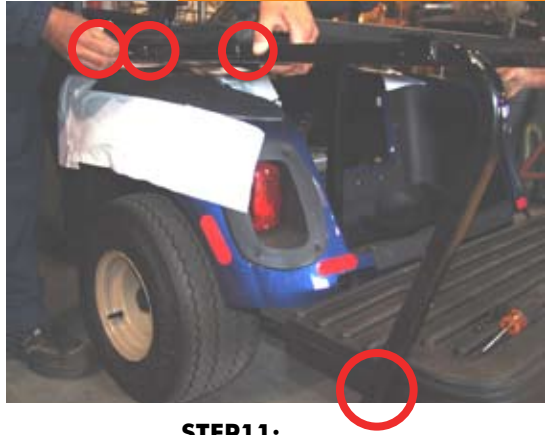
Flip the assembly over and rest the flip flop deck brace into the bagwell. Then connect the rear straight brace extensions to the front seat supports using 2 - 5/16" x 4 1/2" bolts, 4 - 5/16" flat washers, and 2 -5/16" nylock nuts. Only finger tighten at this point.

**STEP9:**

Line up the flip flop deck brace to the pilot holes in the bagwell. Then drill through the top of the bagwell with a 5/16" drill bit. Then slide the two 5/16" x 2" bolts with 5/16" flat washers through the main frame support, bagwell and step frame tabs. Then finger tighten the 5/16" nuts with 5/16" flat washers under the bagwell to hold the main frame support into place.

STEP10:

Then secure the top section of each footrest support using 3 - 1/4" x 1 3/4" bolts with 1/4" flat and locking washers. Secure the bottom of the footrest supports to the footrest using two 5/16" x 2 1/2" bolts with four 5/16" flat washers and two 5/16" nylock nuts. Install two 1" caps at the bottom of the supports.



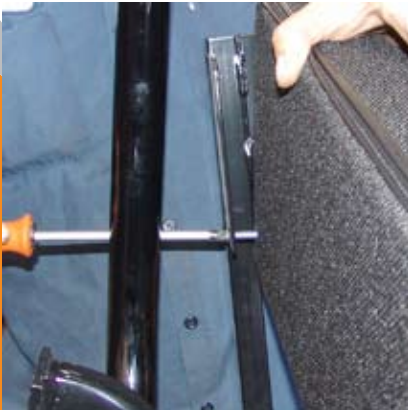
STEP11:

Install the hand passenger and driver side hand rails with the tabs facing inward slide three 5/16" x 1 3/4" bolts with three 5/16" washers through the armrest holes then install the 5/16" flat washers and 5/16" nylock-nuts and finger tighten. Only finger tighten at this point Repeat procedure for other side.



STEP12:

Then install 2 - 1/4" x 1/2" phillips head bolts into the large arm rest tabs one on each side.

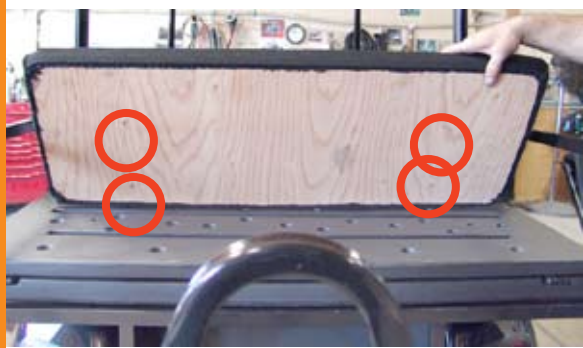


STEP13:

Then install the seat back onto the armrest tabs using the inner holes on both sides with 4 - 1/4" x 1 1/4" phillips flat head screws and fully tighten.

**STEP14:**

Then install the hinges to the flip flop seat. Using 6 philips flat head screws.

**STEP15:**

Line up the bottom of the seat to the flip flop. You will notice 4 dimples in the plastic flip flop portion of the seat. Drill through the plastic flip flop portion of the seat using a 1/4" drill bit then install 4 - 1/4" x 2" Phillips flat head bolts to attach the seat bottom.

STEP16:

Fully Tighten All Bolts and screws. Start with the front seatback supports, then the 2 bolts in the bagwell, the bolts under the seat, the bolts on the side step supports, and then the bolts along the handrails. Then tap in the 1" end caps into the bottom of the foot rest supports and the tops of the arm rests and front seat back supports.

Important: Re-check all of the bolts and screws and make sure they are tight. Some may have become loose again while tightening other parts.

Optional Longtop and Stock Top Supports.

Then install the top supports using the outer 2 holes on the armrest tabs with L-shape on top facing toward the back of the cart.

If you would like an 80" LongTop or stock top supports please contact a Strech Plastics Sales Rep at: 1-800-752-6799



STRECH PLASTICS ARE MANUFACTURERS AND DISTRIBUTORS OF THE HIGHEST QUALITY GOLF CAR PRODUCTS

Strech
Plastics, Inc.
est. 1974

Golf Car Accessories Leader



Specializing In:

Dashes • Trays
Steering Wheel Covers • Lift Kits
Windshields • Dash Trays • Lights
Cowls • Rear Seat Kits • Wheels and Tires
Steering Wheels • Billet Accessories
Wheel Covers • Storage Covers • Weather Enclosures
Coolers and Brackets • Ball and Club Washers • Mirrors
Ramps • Storage Covers • Sand and Seed Bottles • And More . . .

©2008 Rev.01/08/08

VISIT US ON THE WEB TO CHECK OUT MORE GREAT PRODUCTS — www.strechplastics.com