



INSTALLATION INSTRUCTIONS

BOLT ON 4 PASSENGER SEAT KIT FOR PRECEDENT

Model: Club Car Precedent

C-6-23



TABLE OF CONTENTS

Table of Contents	1
Kit Contents	1-4
Disassembly	5-6
Assembly	7-18

KIT CONTENTS



ID	Qty	Product #	Description
A	6	HW1.0-06	1" Tube End Cap
B	12	HW14-13	1/4" SAE Flat Washer
C	12	HW14-14	1/4" Split Lock Washer
D	8	HW14-38	1/4" X 1 1/4" Fender Washer
E	4	HW14-19	1/4"-20 x 1 1/4" Phillips Flat Head Zinc
F	10	HW516-17	5/16" - 18 Nylon Lock Nut
G	24	HW516-18	5/16" SAE Flat Washer
H	4	HW14-01	1/4" x 1" H.H.C.S. Bolt/Grade 2
I	8	HW14-34	1/4" x 1-3/4" H.H.C.S. Bolt
J	8	HW14-65	1/4" x 1-1/4" H.H.C.S. Bolt
K	2	HW516-04	5/16" x 1-3/4" H.H.C.S. Bolt/Grade 2
L	6	HW516-07	5/16" x 2-1/2" H.H.C.S. Bolt/Grade 2
M	4	HW8MM-08	8MM x 90MM H.H.C.S. Grade 8.8
N	2	HW516-15	5/16" - 18 x 5" H.H.C.S. Bolt/Grade 2

K



L



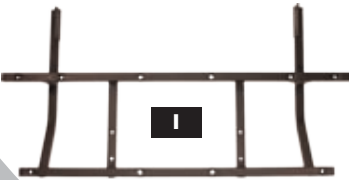
M



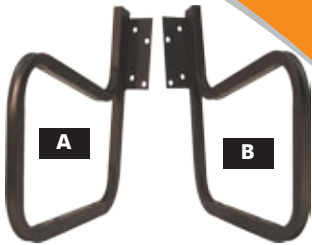
G



H

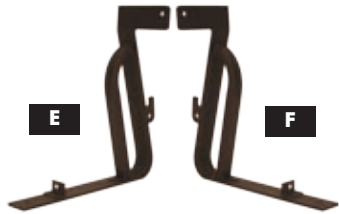


I



A

B



E

F

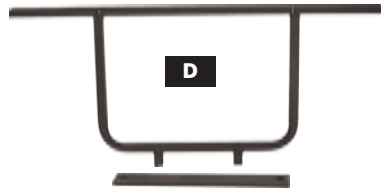


N

C



D



J



ID	Qty	Product #	Description
A	1	C-6-19-2L	Club Car 4 Seat Arm Rest Left
B	1	C-6-19-2R	Club Car 4 Seat Arm Rest Right
C	1	C-6-23-10	Precedent 4 Seat Main Frame Cross Bar
D	1	C-6-23-4	Precedent 4 Seat Under Seat Brace
E	1	C-6-23-6L	Precedent 4 Seat Back Support Mount Plate Left
F	1	C-6-23-6R	Precedent 4 Seat Back Support Mount Plate Right
G	1	C-6-23-7L	Precedent 4 Seat Step Brace Left
H	1	C-6-23-7R	Precedent 4 Seat Step Brace Right
I	1	C-6-23-8	Precedent 4 Seat Step Frame
J	2	C-6-23-9	Precedent 4 Seat Brace Crossbar
K	1	*HW-42B	*4 Passenger Kit Seat Beige
L	1	MS-6-09	4 Passenger Seat Kit Step Stretch Plastics
M	1	C-6-28	Club Car Precedent 4 Seat Dressing Cover
N	1	C-6-27	Club Car Precedent 4 Seat Plate Cover

***SEAT KIT ALSO AVAILABLE IN THE FOLLOWING COLORS:**

- HW-42A — Antelope
- HW-42B — Beige
- HW-42C — Camouflage
- HW-42I — Ivory
- HW-42T — Tan
- HW-42W — White

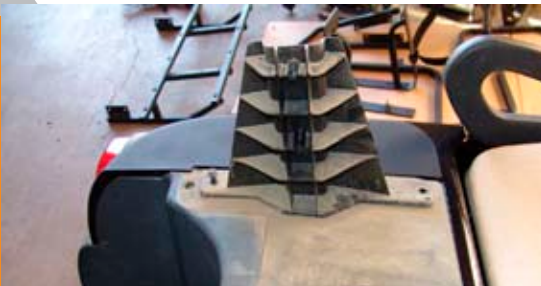


STEP 1:
Remove the top (not shown). Remove the screws inside the basket and remove the top supports. Be sure to save any hardware. It will be needed during the installation.

STEP 2:
Remove the bolts behind the rear basket and remove the rear basket.



STEP 3:
Remove the bolts to the supports and remove the supports and save all hardware.





STEP 4:
Remove the bagwell
liner.

STEP 5:
Then remove the T40
Torx Bolts under the
bagwell cover.



STEP 6:
Using a 5/16 drill
bit drill out the bolt
holes to accept new
bolts for the seat kit.



STEP 7:
Place the Pinch Plate
Cover using the
middle hole for guide
placement.



STEP 8:
Put the seat back
support in place with
the top tab facing
inward. Then place
4 stock bolts into the
holes and tighten
them with your
fingers to hold the
support in place but
do not fully tighten
them yet.





STEP 9:
Remove 2 6mm bolts from the top of the old seat basket.

STEP10:
Use the 2 6mm bolts from the basket to secure the seat backing plate in place. These 2 bolts should be tightened fully.



STEP11:
Slide the seat backing plate on the bolted side into the hook tabs on the seat support.

STEP12:

Then use the 2 stock bolts you removed from the seat to secure it to the new seat support.



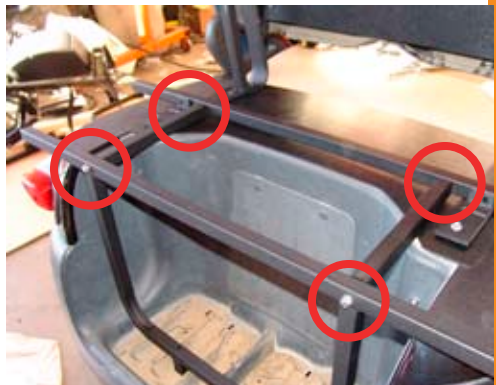
STEP13:

Put the under seat brace into place and just slide the 5/16" x 5" bolts through the under seat brace into the holes drilled into the bagwell just to help support the under seat brace while you work.



STEP14:

Place the main frame cross bar into place and bolt together the main frame cross bar to the under seat brace with 2 seat brace cross bars. Use 4 - 1/4" x 1 3/4" bolts with flat and locking washers





STEP15:

Then secure the main frame cross bar to the seat in front of the back support tabs with 5/16" x 1 3/4" bolts using flat washers and nylock nuts.

STEP16:

Now its time to tighten all of the bolts except do not place nuts on or tighten the bolts in the bagwell yet.



STEP17:

Start by tightening the seat back supports.



STEP18:

Then tighten the bolts on the seat back. Then the bolts on the top of the frame



STEP19:

Place the seat bottom upside down and secure the right and left step frame with 4 - 1/4" x 1" bolts. Make sure the metal tabs are facing inward.



STEP20:

Remember to only finger tighten the bolts at this point.





STEP21:

Then place the seat assembly onto the frame. Using 4 - 1/4" x 1 3/4" bolts and flat washers, bolt together the seat assembly to the threaded ends of the under seat frame.

STEP22:

Then install the tube end caps into the tube ends under the seat.



STEP23:

Remember do not tighten the bolts to the seat frame on both sides yet. That will be completed later in the instructions.



STEP24:

Do not tighten the bolts under the seat yet the bars need to flex some to get the step into place



STEP25:

Install the left and right seat arm rests using 4 - 5/16" x 2 1/2" bolts, 5/16" washers on both sides, and nylock nuts. Only finger tightening. Make sure the upper tabs face inward.

STEP26:

Secure the seat back using 4 philips head screws and tighten fully.





STEP27:

Then tighten the arm rest bolts to the seat frame on both sides.

STEP28:

Remove the 2 bolts behind the rear wheel on both sides.



STEP29:

Lay the step with the bottom facing up and place the step frame into the step.



STEP30:

Optional: If you have purchased a grab bar with your seat kit you must install the 4 bolts grab bar bolts under the frame.



STEP31:

Optional: Slide the 4 grab bar bolts from under the frame and attach the washers and bolts for use later when installing the grab bar. If you want to install a grab bar but forgot to purchase one, please call your Strech Plastics Sales Rep.





STEP32:

Secure the step to the frame using 8, 1/4" x 1 1/4" bolts and fender washers. Place all the bolts in loose before tightening.

STEP33:

Secure the step to the left and right foot brace using 2 - 5/16" x 2 1/2" bolts and washers. Only finger tighten for now



STEP34:

Swing the footrest frame tabs up into the wheel well. Line up the holes and replace with the M bolts 8mm x 90mm.

STEP35:

Now tighten all the bolts on the frame and footrest.



STEP36:

Under the bagwell place the under seat brace bar over the bolts going through the bottom of the bagwell.



STEP37:

Then tighten securely into place using 5/16 washers and Nylock nuts.





STEP38:

Now check all of the bolts on the rear seat kit to make sure all the bolts are tight. Remember tightening some bolts during the process could possibly cause others to loosen so always be sure to check all the bolts a second time. Be sure to also tighten the bolts under the seat.

STEP39:

Congratulations your new Stretch Plastics Inc. 4 Passenger Seat Kit is now installed.



STRECH PLASTICS ARE MANUFACTURERS AND DISTRIBUTORS OF THE HIGHEST QUALITY GOLF CAR PRODUCTS

Strech
Plastics, Inc.
est. 1974

Golf Car Accessories Leader



Specializing In:

Dashes • Trays
Steering Wheel Covers • Lift Kits
Windshields • Dash Trays • Lights
Cowls • Rear Seat Kits • Wheels and Tires
Steering Wheels • Billet Accessories
Wheel Covers • Storage Covers • Weather Enclosures
Coolers and Brackets • Ball and Club Washers • Mirrors
Ramps • Storage Covers • Sand and Seed Bottles • And More . . .

©2008 Rev.01/08/08

VISIT US ON THE WEB TO CHECK OUT MORE GREAT PRODUCTS — www.strechplastics.com