



INSTALLATION INSTRUCTIONS

CLUB CAR PRECEDENT HEADLIGHTS & TAILLIGHTS

C-5-11, C-5-12, C-5-12K



Club Car Precedent Light Kit Installation Instructions



Step 1:

Disconnect main (-)

Step 2:

Remove control cover (center of batteries) by removing 10mm bolt next to the run switch.

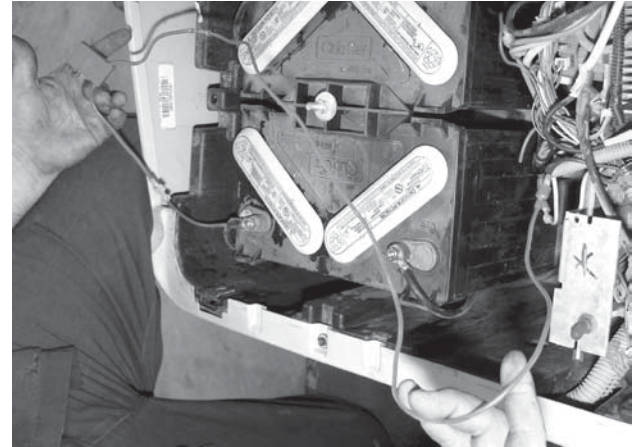
Step 3:

Locate Blue 8 - guage wire end. It will be zip tied in harness down by solinoid.

Step 4:

Locate blue 8 guage wire end on Pos (+) post of last battery, connect 2 8 - guage wires with red 15AMP fuseable link. Shown in Figure 1.

FIGURE 1: Connecting Fusable Red Link to Blue



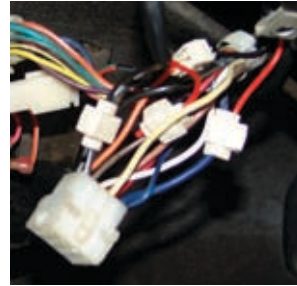
Step 5:

Drop key plate off dash, locate factory 12 pin connector, not plugged into anything. Shown in Figure 2.

Step 6:

Using 4 T-Splices, Splice L-21 into Factory 12 pin connector according to diagram & figures 2 & 3. The # 1 red long wire in Figure 3 connect to main power (blue). The #1 Black long wire in Figure 3 connect to the main ground wire (orange). The # 2 red short wire in Figure 3 connect to main rear ground (brown). The #2 Black short wire in Figure 3 connect to the rear ground wire (black w/white stripe).

Figure 2



Black w/white stripe ● White ● Yellow ● Blue

Orange ● Blue w/white stripe ●

Black ● Brown ● Tan ● Red

Blue - Power (main) to #1 Red
 Orange - Ground (main) to #1 Black
 Brown - Rear (power) to #2 Red
 Black w/white stripe - Rear (ground) to #2 Black

Step 7:

Drill a 1/2" hole on the dash key plate and install the toggle switch Figure 3 number 3.

Step 8:

Mount the Undercarriage Cover & Light Brackets using the stock bolts shown in Figure 4. Then attach the lights to the brackets. Run wire from L-21 shown in Figure 3 number 4 & 5 to front lights and connect them with the T-Splices.

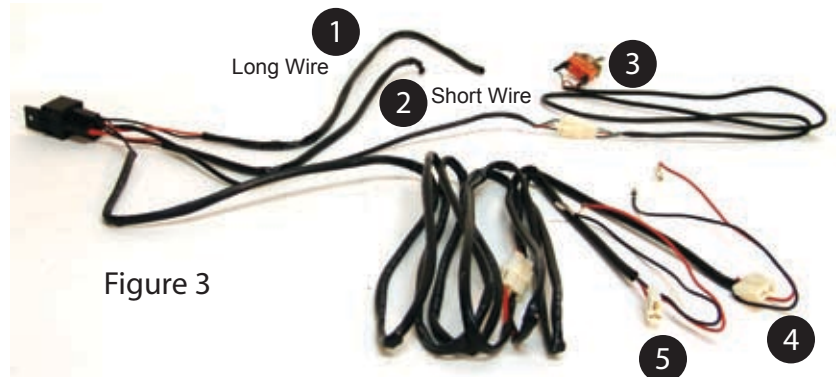


Figure 3

Step 9:

Cut rear body using template provided. Retrieve factory harness wires from inside the hole you cut and use the T-Splices provided to connect the plug ends shown in Figure 5. Attach the taillights to the cart.



Figure 4: Mount the light bracket, undercarriage, & bumper cover.

Step 10:

Reconnect main negative (-) and re-attach the key plate. Use the toggle to test your lights.

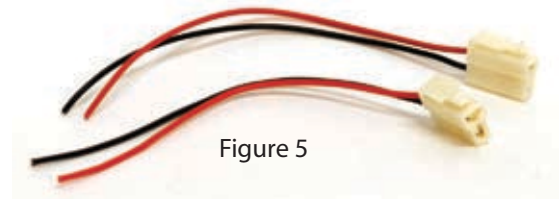


Figure 5

Left Side

Body Line

Bumper

Bagwell

Trim Line

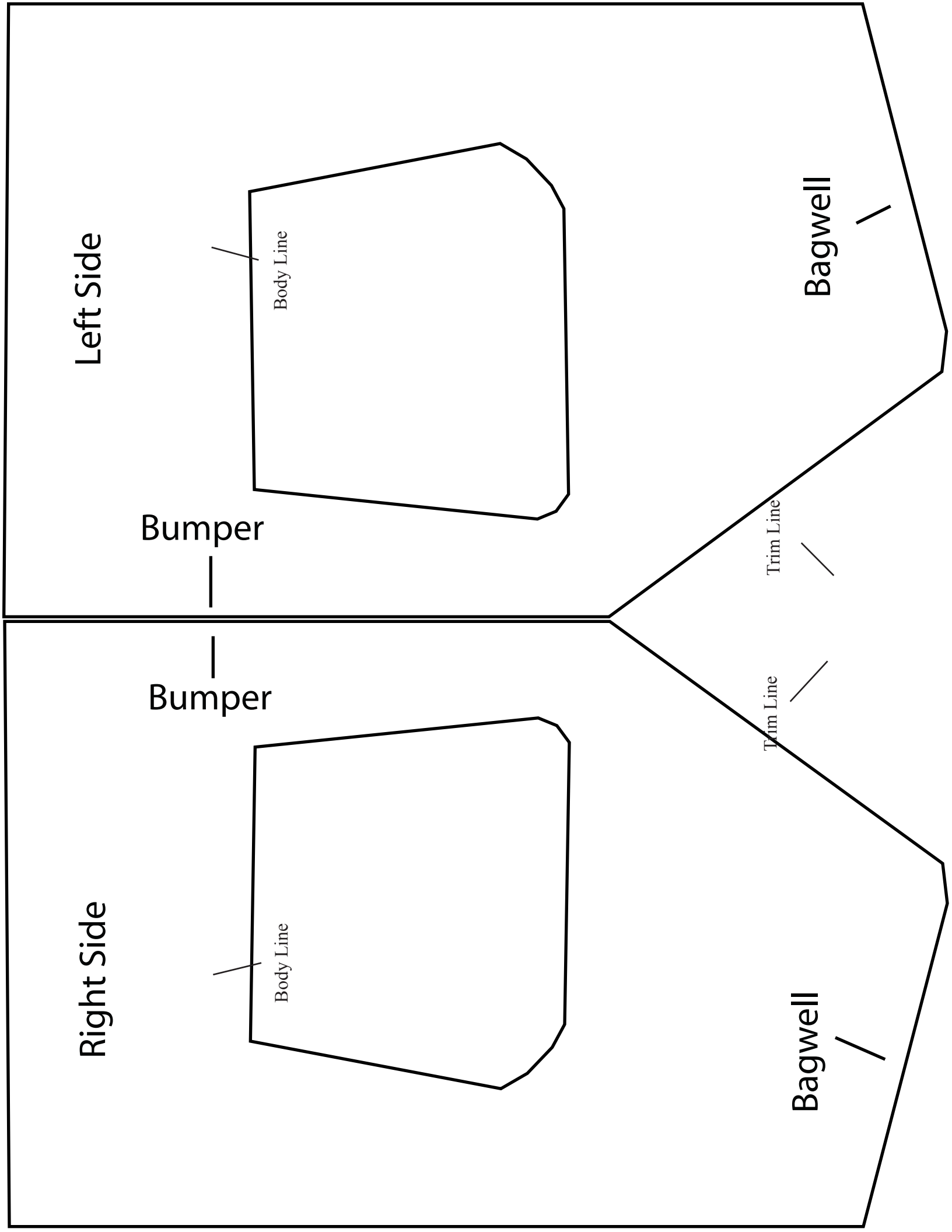
Right Side

Body Line

Bumper

Bagwell

Trim Line





Fusible Link



Wiring Harness



Bumper Cover



Dust Cover



Headlights

Headlight Brackets



Taillights

Taillight Screws

T-Splices

Bracket Screws & Bolts



Taillight Reflectors (Optional)



Specializing In:
Dashes • Trays • Steering Wheel Covers
Lift Kits • Windshields • Dash Trays • Lights
Cowls • Rear Seat Kits • Wheels and Tires
Steering Wheels • Billet Accessories
Wheel Covers • Storage Covers • Weather Enclosures
Coolers and Brackets • Ball and Club Washers • Mirrors
Ramps • Storage Covers • Sand and Seed Bottles • And More . . .

